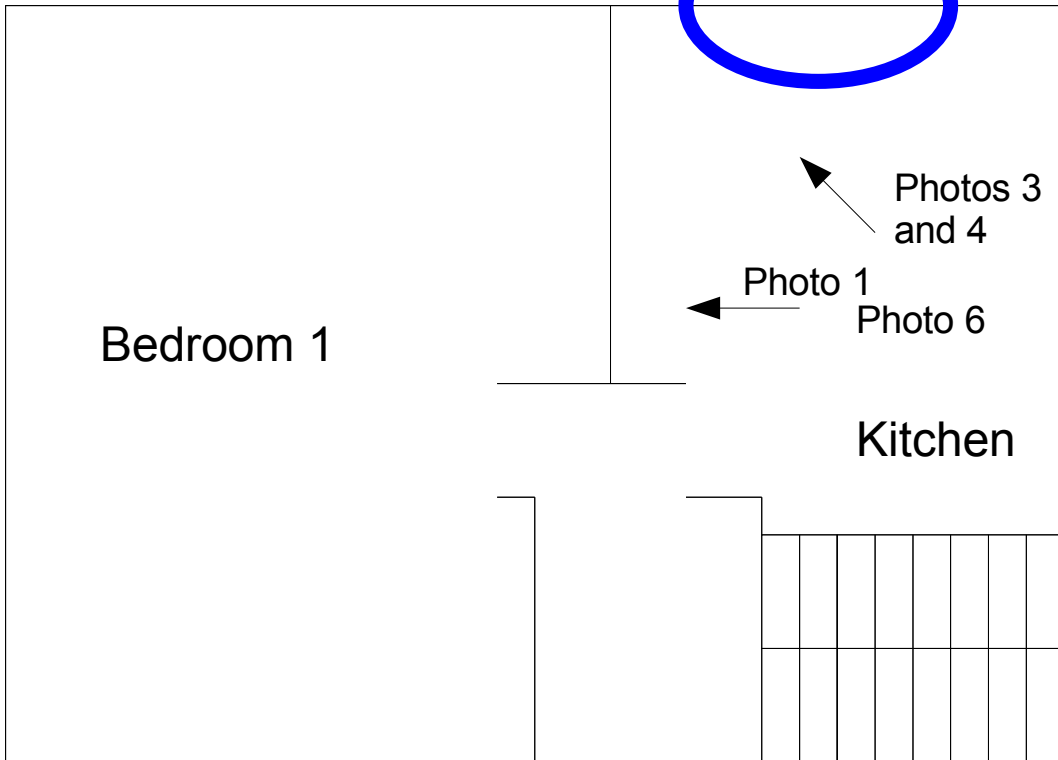


Maple Street

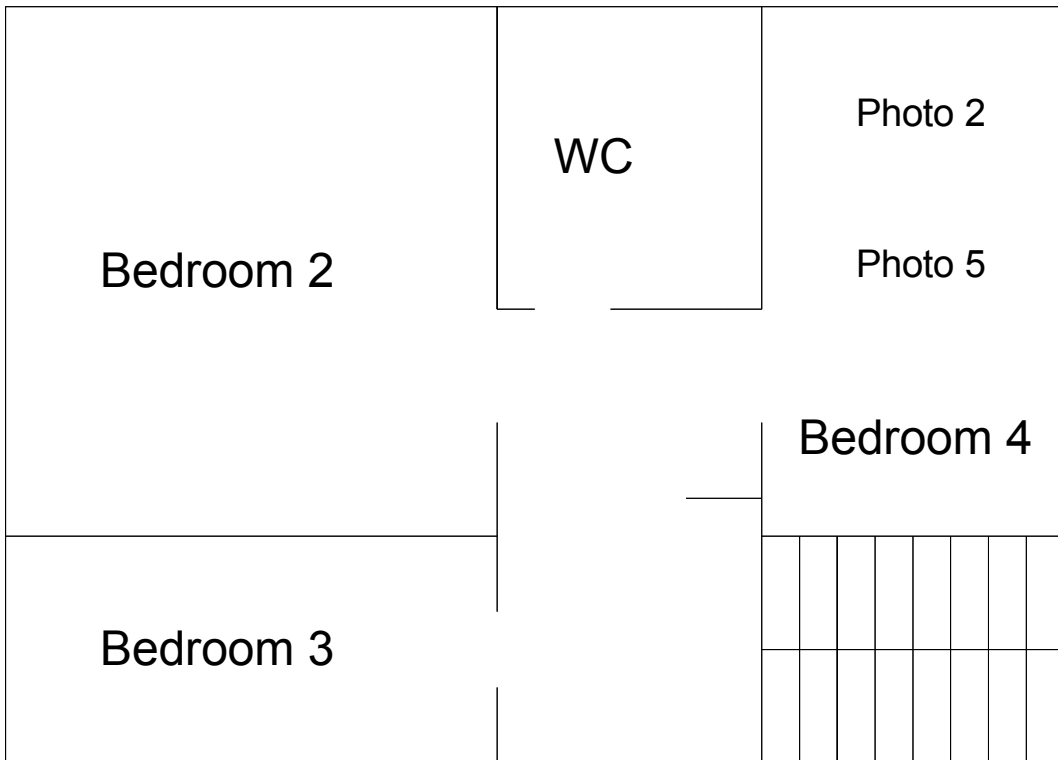
→ N

Approx Scale: 5m

Third Floor



Fourth Floor



Photographs accompany this plan and are indicated by an arrow that shows the direction of shot and a label referring to the number of the back of the photo. The absence of an arrow indicates that the shot was vertically upwards

Sketch floor plan of the third and fourth floor, 50 Maple Street.

Prepared by Nicholas Black,
September 2006